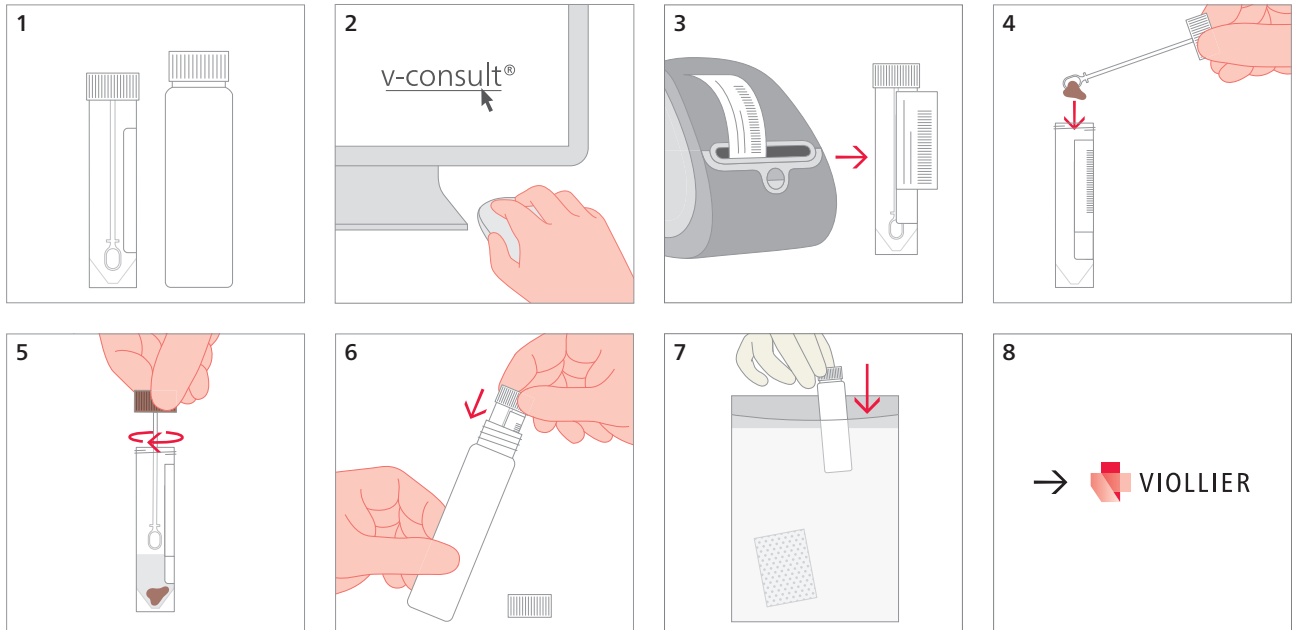


Feces – Microbiology / Chemistry (native)

Tube, white (32)



4 2 g feces

Chemistry:

- Calprotectin
- Leukocytes (Lactoferin)
- Pancreasa elastase

Pathogen	Antigen	Single PCR	Culture	Microscopy
Viruses				
Adenoviruses	×			
Noroviruses		×		
Rotaviruses	×			
Bacteria + Yeasts				
<i>Helicobacter pylori</i>	×			
Mycobacteria			×	
Yeasts			×	
Bacterial toxins				
<i>Clostridium difficile</i>	GHD and Toxins A + B	×		
Parasites				
<i>Entamoeba histolytica</i>	×			
<i>Giardia lamblia</i>	×			
<i>Strongyloides stercoralis</i> (15 g feces)			×	×

Shipping material:

Please label with name, first names and date of birth of the patient