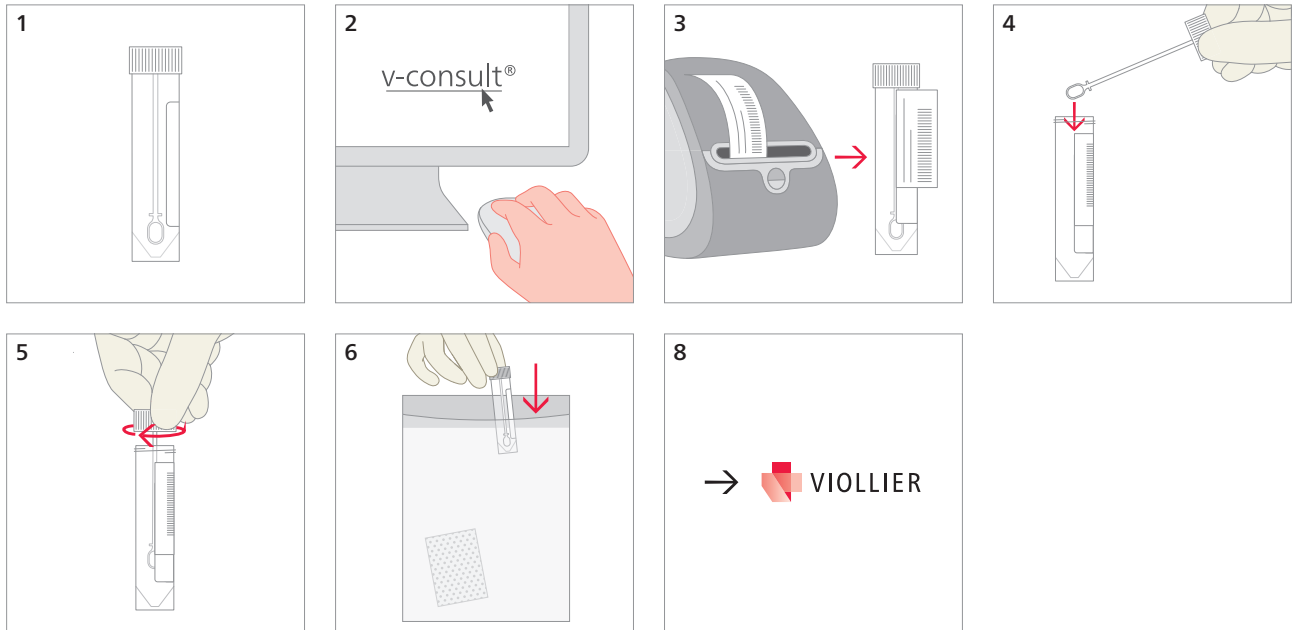


## Secretions – respiratory tract

Tube, white (32)



### Sputum, bronchial secretion, BAL: 4 mL

- General bacteriology culture and microscopy
- *Bordetella para- / pertussis* PCR
- *Chlamydomphila pneumoniae* PCR
- Eosinophilic granulocytes
- *Legionella pneumophila* PCR
- *Mycoplasma pneumoniae* PCR
- Mycobacteria (incl. TB) microscopy  
Send in at least 5 mL morning sputum on three consecutive days or at a one day interval
- *Mycobacterium tuberculosis complex* PCR
- Nocardiae culture
- Fungi culture
- *Pneumocystis jirovecii*: microscopy or PCR  
Only in BAL or induced sputum
- Respiratory viruses PCR

Shipping material:

Please label with name, first names and date of birth of the patient