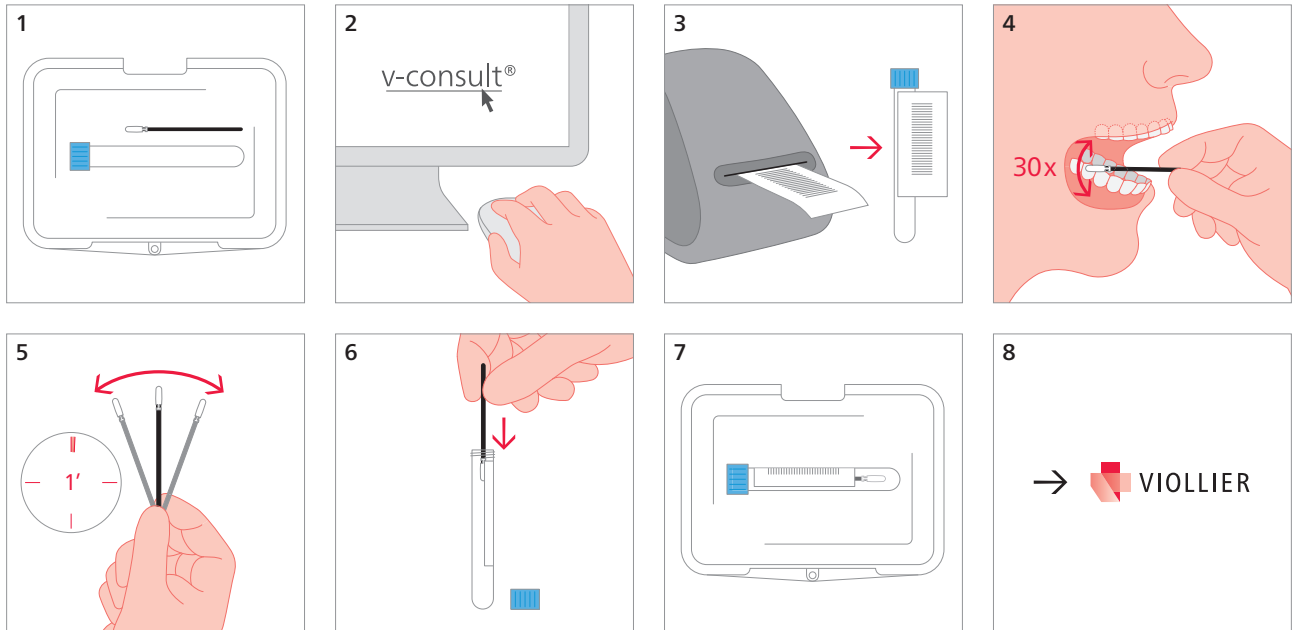


Swab – buccal mucosa (human genetics)

Swab kit buccal mucosa (71)



-
- 4 Stroke at least 30 × vigorously over the inner surface of the cheek
-
- 5 Fan the swab in the air for 1 min
-
- 7 Store sample at room temperature prior to transport
-

Genetic predispositions, e.g. lactose intolerance

Shipping material:

Please label with name, first names and date of birth of the patient